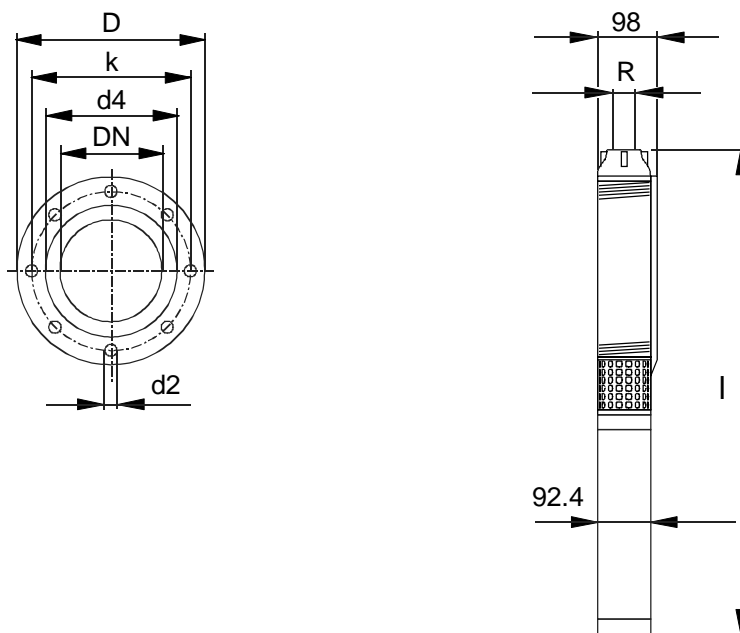


Specification

- multistage centrifugal pump in jacked design coupled with **oddesse** submersible motor
- discharge end with integrated non-return valve
- driven by three-phase or mono-phase AC motors
- minimal water level above the pump unit 1 m
- min. cooling flow 0.08 m/s, max. ambient temperature 30 °C (higher temperature on request)
- pure, clean water with content of solids up to 50 mg/l
- standard connection: R = G2 (pipe thread according to DIN ISO 228 part 1)
- other connections on request
- hydraulic performance tests for acceptance according to DIN EN ISO 9906 class 2
- special design (Horizontal installation, etc.) on request

Main dimensions



Dimensions of adapters

Type	reduction thread	adapters						
		thread ⇒ flange	dimensions					m [kg]
			D [mm]	b [mm]	k [mm]	d4 [mm]	d2 [mm]	
po-so-1.6/4.6 po-so-3.2/4.6 po-so-6.3/4.6 po-so-10/4.6	G2 ⇒ G1 ¼	G2 ⇒ DN32, PN16	140	16	100	78	4x ø18	2.5
		G2 ⇒ DN32, PN40	140	18	100	78	4x ø18	2.7
		G2 ⇒ DN50, PN16	165	18	125	102	4x ø18	3.5
		G2 ⇒ DN50, PN40	165	20	125	102	4x ø18	3.7
		G2 ⇒ DN65, PN16	185	18	145	122	4x ø18	4.1
		G2 ⇒ DN65, PN40	185	22	145	122	8x ø18	4.3
		G2 ⇒ DN80, PN16	200	20	160	138	8x ø18	4.7
G2 ⇒ DN80, PN40	200	24	160	138	8x ø18	5.7		

Flange dimensions according to DIN 2633 (PN16) and DIN 2635 (PN40)

Material: zinc-coated or stainless steel

PN nominal pressure [bar], DN nominal diameter [mm], b thickness of flange [mm], m weight [kg]

Flanges with 2 cable recesses

subject to alterations

Material of construction

Submersible motor pumps po-so/4.6

According to DIN

components	material
impeller	LEXAN
stage casing, diffuser	noryl / GFN2
external casing	stainless steel / 1.4301
suction casing, outlet branch	brass
radial bearing	sintered bronze / rubber
suction strainer	stainless steel / 1.4301
coupling	stainless steel / 1.4404
shaft	stainless steel / 1.4104
screws, nuts and bolts	stainless steel A2 / 1.4301/1.4303
motor	see chapter submersible motors

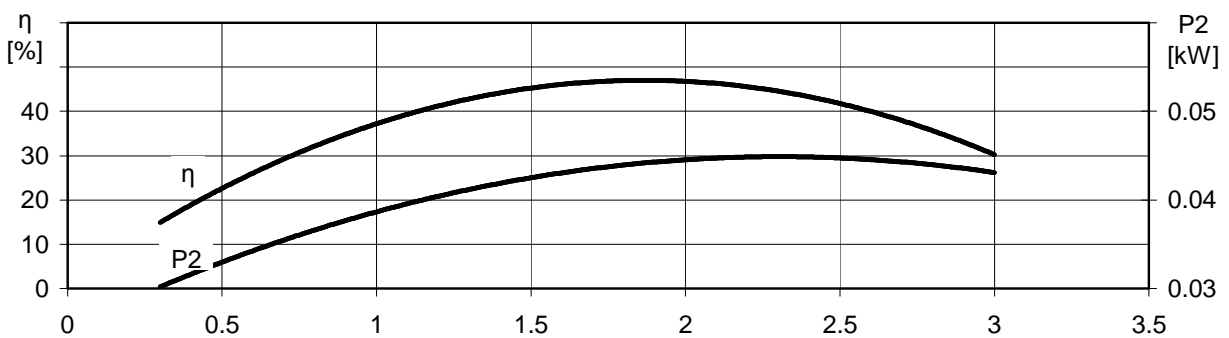
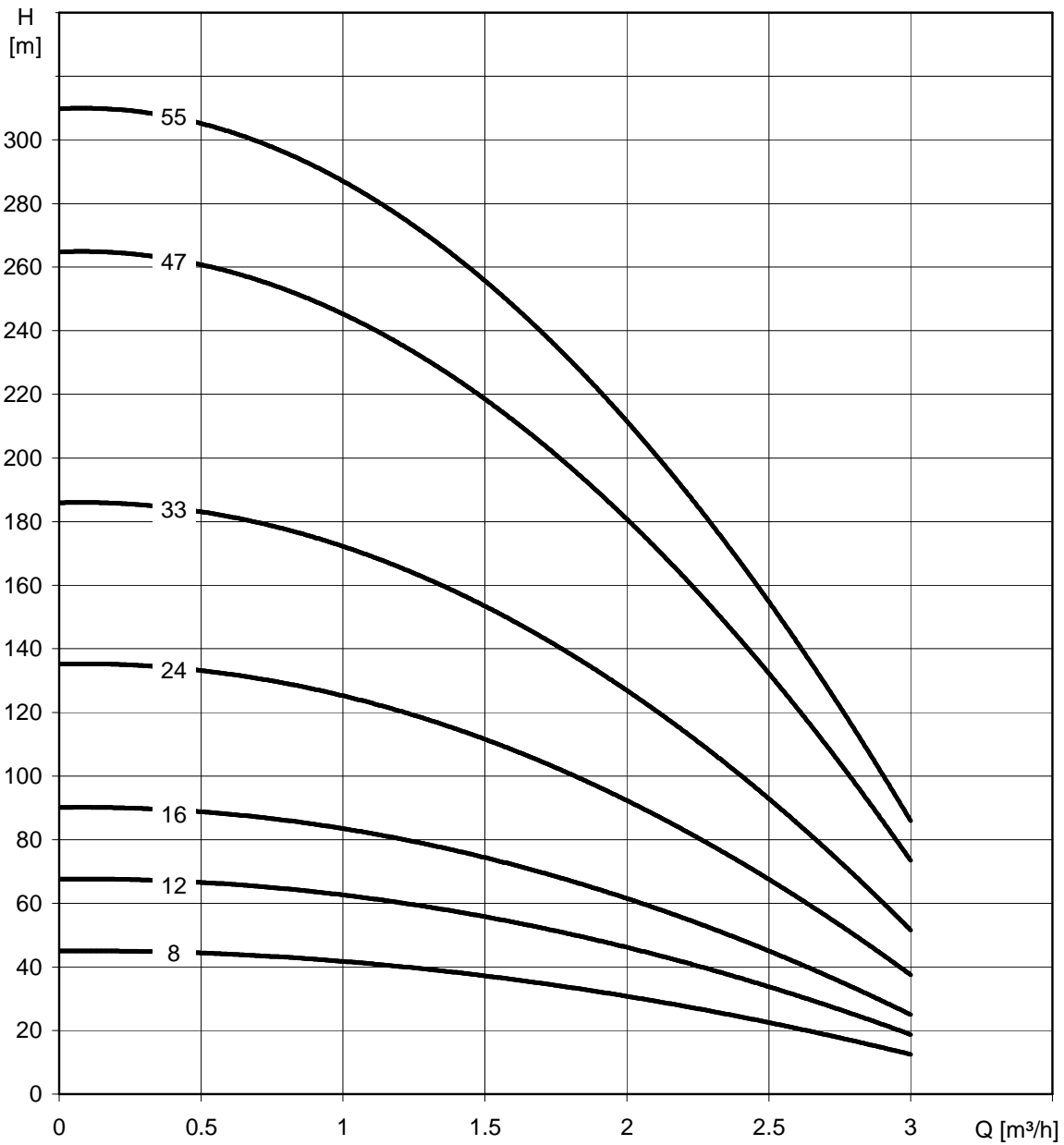
According to AISI

components	material
impeller	LEXAN
stage casing, diffuser	noryl / GFN2
external casing	stainless steel / AISI 304
suction casing, outlet branch	brass
radial bearing	sintered bronze / rubber
suction strainer	stainless steel / AISI 304
coupling	stainless steel / AISI 316L
shaft	stainless steel / AISI 316L
screws, nuts and bolts	stainless steel A2 / AISI 304/305
motor	see chapter submersible motors

oddesse reserve the right to employ construction materials following German (DIN) standard

po-so-1.6/4.6

2850 r.p.m. - 50 Hz



subject to alterations

po-so-1.6/4.6
2850 r.p.m. - 50 Hz

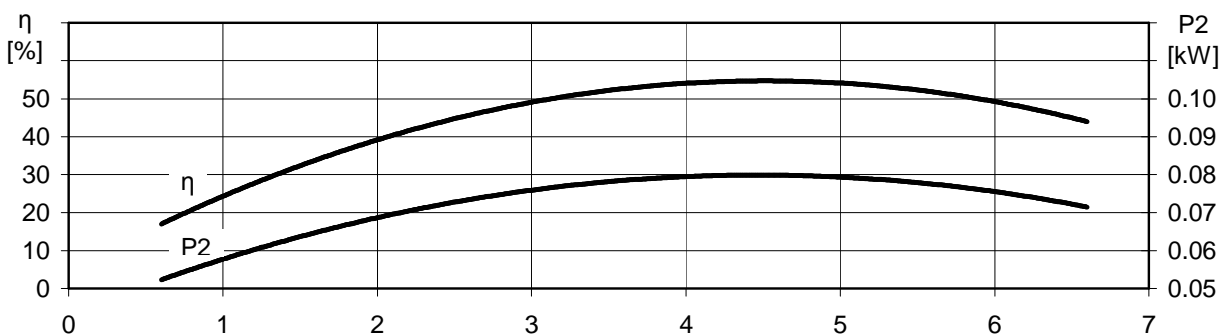
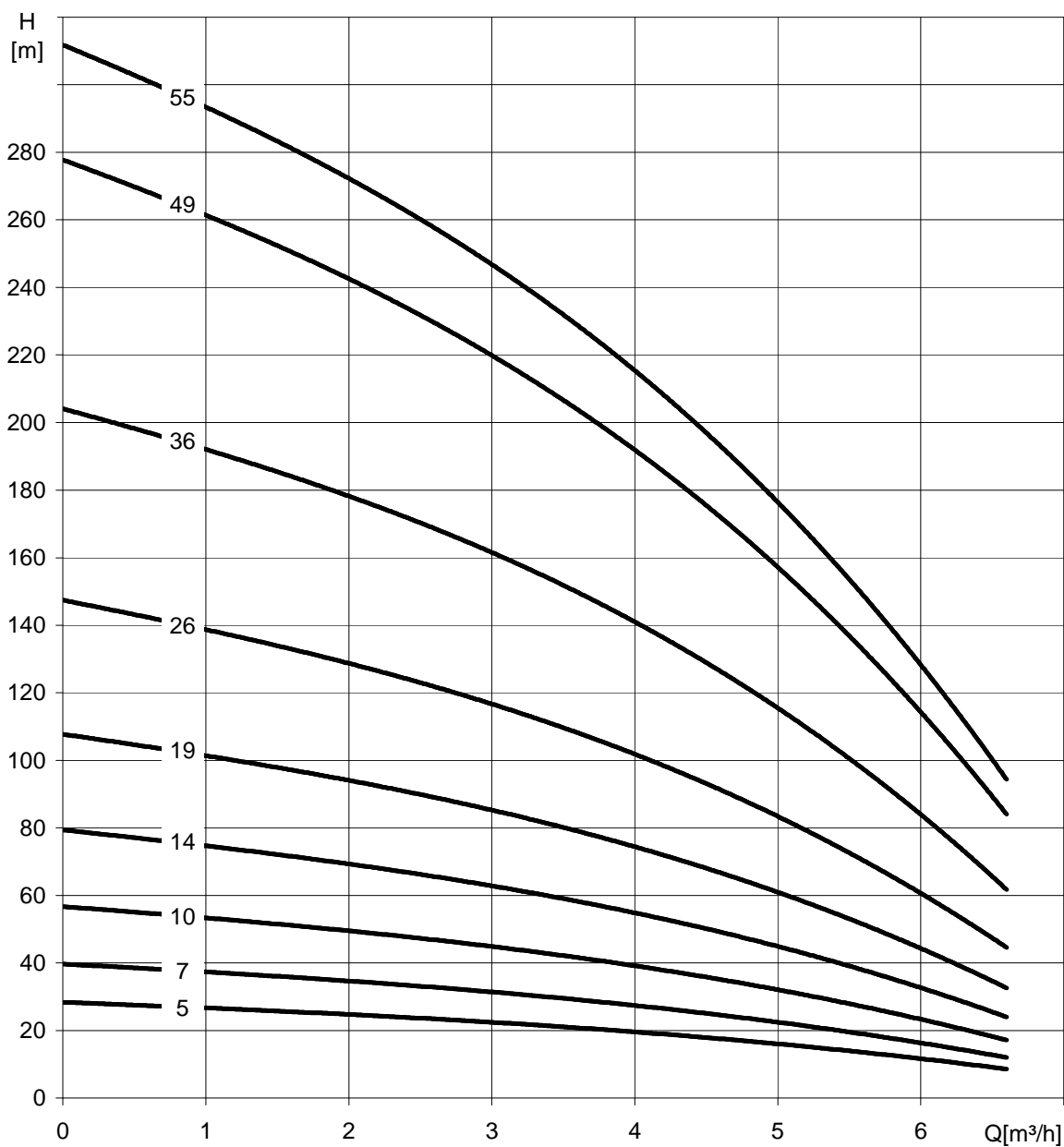
Type	Power P		Amperes 400 V [A]	Delivery rate Q									Length l [mm]	Weight m [kg]
	[kW]	[HP]		[l/s]	0.08	0.17	0.25	0.33	0.44	0.58	0.67	0.8		
				[m³/h]	0.3	0.6	0.9	1.2	1.6	2.1	2.4	3.0		
po-so-1.6- 8/4.6	0.37	0.5	1.6	Delivery head H [m]	45	44	43	40	36	29	24	13	581	10
po-so-1.6-12/4.6	0.55	0.75	1.9		67	66	64	61	54	44	36	19	691	11
po-so-1.6-16/4.6	0.75	1.0	2.4		89	88	85	81	72	58	48	25	811	13
po-so-1.6-24/4.6	1.1	1.5	3.4		134	131	128	121	109	88	72	38	1011	15
po-so-1.6-33/4.6	1.5	2.0	4.4		184	181	175	167	149	120	99	52	1278	19
po-so-1.6-47/4.6	2.2	3.0	5.9		262	257	250	237	213	172	142	74	1683	23
po-so-1.6-55/4.6	3.0	4.0	8.3		307	301	292	278	249	201	166	87	2024	32

up to 3.7 kW also available in 1~ / 230V version

subject to alterations

po-so-3.2/4.6

2850 r.p.m. - 50 Hz



subject to alterations

po-so-3.2/4.6
2850 r.p.m. - 50 Hz

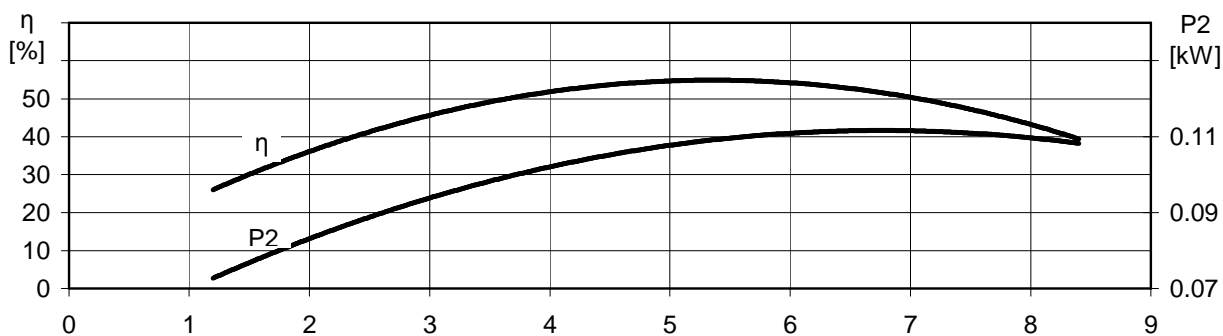
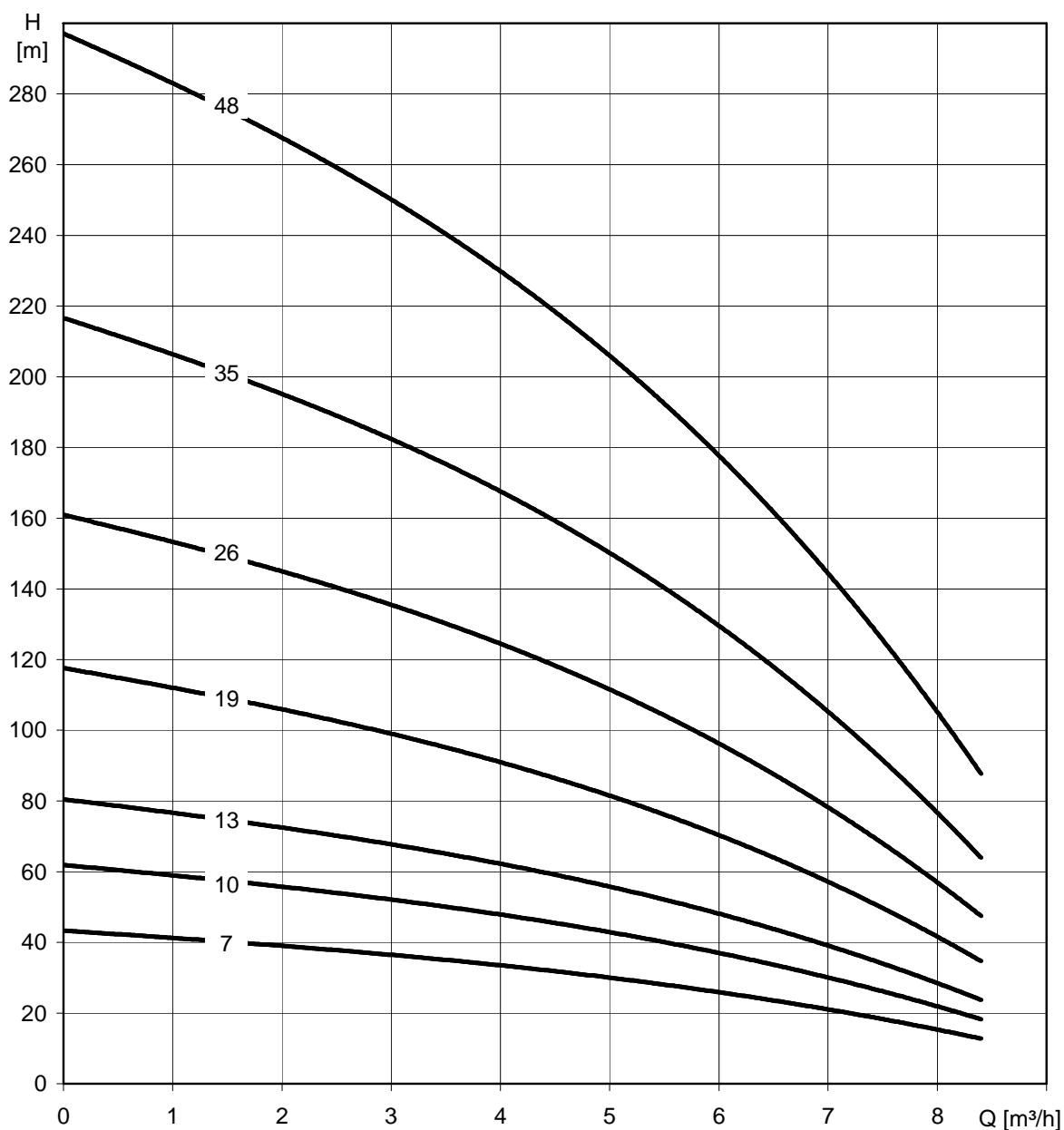
Type	Power P		Amperes 400 V [A]	Delivery rate Q								Length l [mm]	Weight m [kg]	
	[kW]	[HP]		[l/s]	0.17	0.50	0.89	1.00	1.17	1.33	1.50			1.83
				[m³/h]	0.6	1.8	3.2	3.6	4.2	4.8	5.4			6.6
po-so-3.2- 5/4.6	0.37	0.5	1.6	Delivery head H [m]	27	25	22	21	19	17	14	9	551	9
po-so-3.2- 7/4.6	0.55	0.75	1.9		38	35	31	29	26	23	20	12	631	10
po-so-3.2-10/4.6	0.75	1.0	2.4		55	50	44	42	38	33	29	17	751	12
po-so-3.2-14/4.6	1.1	1.5	3.4		76	70	62	59	53	47	40	24	896	14
po-so-3.2-19/4.6	1.5	2.0	4.4		104	95	84	79	72	63	55	33	1108	17
po-so-3.2-26/4.6	2.2	3.0	5.9		142	131	114	109	98	87	75	45	1363	20
po-so-3.2-36/4.6	3.0	4.0	8.3		197	181	158	150	136	120	104	62	1869	30
po-so-3.2-49/4.6	4.0	5.5	10.0		268	246	216	205	185	164	141	84	2329	36
po-so-3.2-55/4.6	5.5	7.5	14.0		300	276	242	230	208	184	158	95	2769	41

up to 3.7 kW also available in 1~ / 230V version

subject to alterations

po-so-6.3/4.6

2850 r.p.m. - 50 Hz



subject to alterations

po-so-6.3/4.6
2850 r.p.m. - 50 Hz

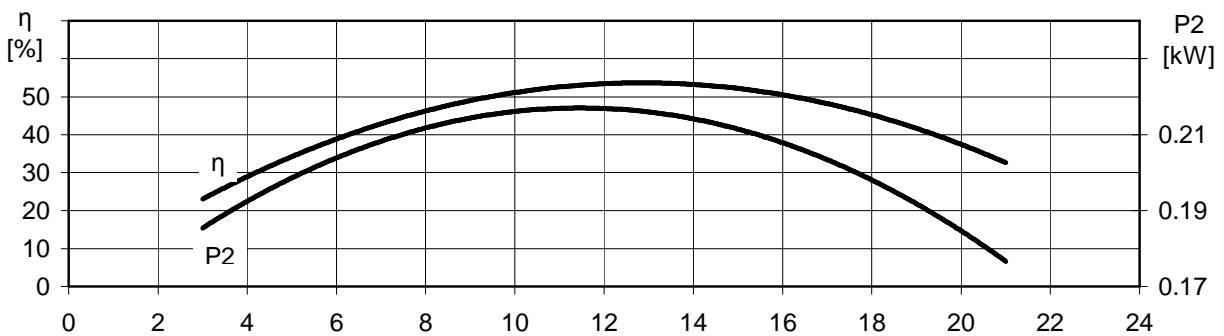
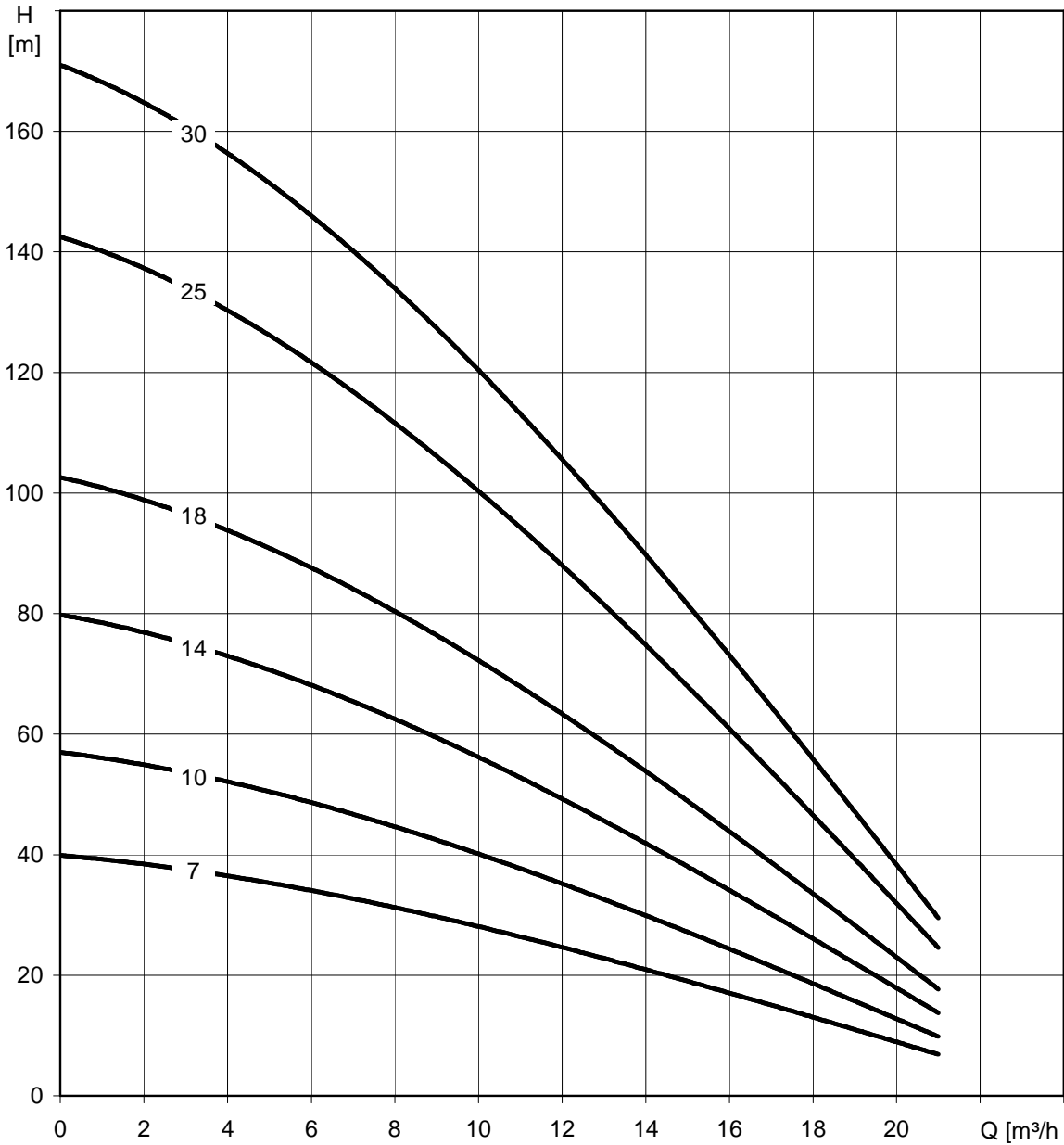
Type	Power P		Amperes 400 V [A]	Delivery rate Q									Length l [mm]	Weight m [kg]
	[kW]	[HP]		[l/s]	0.33	0.67	1.00	1.33	1.5	1.75	2.00	2.33		
				[m³/h]	1.2	2.4	3.6	4.8	5.4	6.3	7.2	8.4		
po-so-6.3- 5/4.6	0.55	0.75	1.9	Delivery head H [m]	29	27	25	22	20	17	14	9	571	10
po-so-6.3- 7/4.6	0.75	1.0	2.4		41	38	35	31	29	24	20	13	661	12
po-so-6.3-10/4.6	1.1	1.5	3.4		58	54	50	44	41	35	28	18	771	13
po-so-6.3-13/4.6	1.5	2.0	4.4		76	70	65	57	53	45	37	24	928	16
po-so-6.3-19/4.6	2.2	3.0	5.9		111	103	95	84	78	66	54	35	1158	19
po-so-6.3-26/4.6	3	4.0	8.3		151	141	129	115	106	90	74	48	1514	27
po-so-6.3-35/4.6	4	5.5	10		204	190	174	155	143	122	99	64	1914	33
po-so-6.3-48/4.6	5.5	7.5	14		279	260	239	212	196	167	136	88	2374	38

up to 3.7 kW also available in 1~ / 230V version

subject to alterations

po-so-10/4.6

2850 r.p.m. - 60 Hz



subject to alterations

po-so-10/4.6
2850 r.p.m. - 50 Hz

Type	Power P		Amperes 400 V [A]	Delivery rate Q								Length l [mm]	Weight m [kg]	
	[kW]	[HP]		[l/s]	0.8	1.7	2.5	2.8	3.3	4.2	5.0			5.8
			[m³/h]	3	6	9	10	12	15	18	21			
po-so-10- 7/4.6	1.5	2.0	4.4	Delivery head H [m]	37	34	30	28	24	19	13	7	1108	17
po-so-10-10/4.6	2.2	3.0	5.9		53	49	43	40	35	27	19	10	1383	21
po-so-10-14/4.6	3.0	4.0	8.3		74	69	60	56	49	38	27	14	1919	30
po-so-10-18/4.6	4.0	5.5	10.0		96	88	77	73	62	49	34	17	2294	36
po-so-10-25/4.6	5.5	7.5	14.0		133	123	107	101	87	68	48	24	2979	45
po-so-10-30/4.6	7.5	10	17.4		159	147	128	121	104	81	57	29	3449	52

up to 3.7kW also available in 1~ / 230V version

subject to alterations